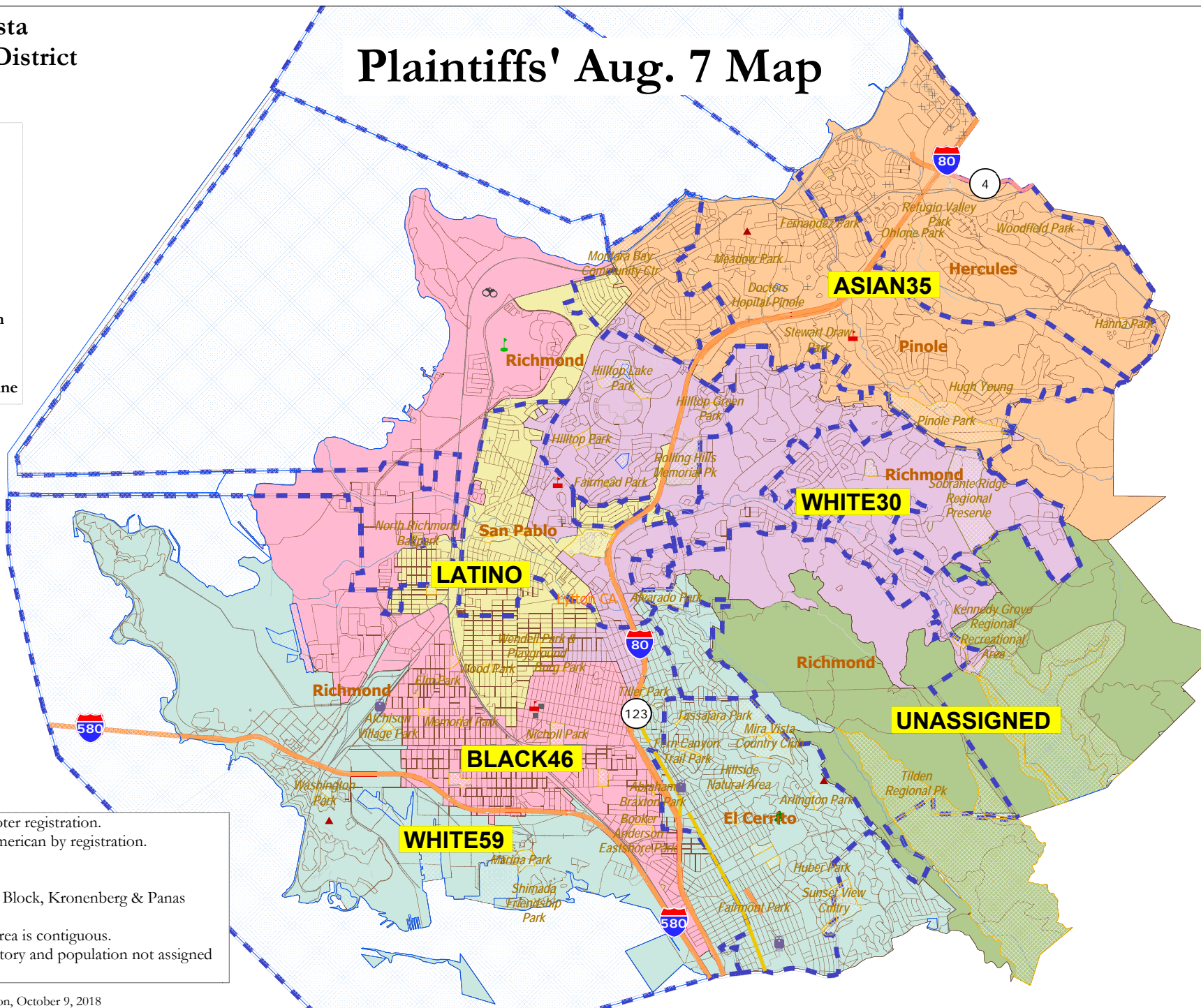


Plaintiffs' Aug. 7 Map



Only the "Asian35" trustee area is contiguous.
"Unassigned" is District territory and population not assigned to any trustee area.

WCCUSD - Plaintiffs' Aug. 7 Map Demographics							
District		ASIAN35	BLACK46	LATINO	WHITE30	WHITE59	Total
<u>Ideal</u>	Total Pop	47,190	47,195	46,855	47,302	47,287	235,829
47,166	Deviation from ideal	21	26	-314	133	118	447
	% Deviation	0.04%	0.06%	-0.67%	0.28%	0.25%	0.95%
Total Pop	% Hisp	20%	43%	66%	25%	13%	34%
	% NH White	27%	8%	8%	26%	51%	24%
	% NH Black	16%	36%	13%	24%	9%	19%
	% Asian-American	34%	10%	11%	21%	23%	20%
Citizen Voting Age Pop	Total	35,810	25,656	21,718	33,380	36,188	152,752
	% Hisp	18%	24%	50%	20%	9%	22%
	% NH White	30%	15%	14%	31%	59%	32%
	% NH Black	14%	46%	16%	24%	8%	21%
	% Asian/Pac.Isl.	35%	14%	18%	23%	22%	23%
Voter Registration (Nov 2016)	Total	27,256	21,646	16,390	25,692	32,991	123,976
	% Latino est.	24%	27%	52%	21%	9%	24%
	% Spanish-Surnamed	22%	24%	47%	19%	8%	21%
	% Asian-Surnamed	10%	4%	5%	8%	9%	7%
	% Filipino-Surnamed	6%	1%	2%	2%	1%	3%
	% NH White est.	40%	15%	18%	40%	70%	41%
	% NH Black	19%	52%	21%	28%	9%	24%
Voter Turnout (Nov 2016)	Total	20,368	13,051	9,883	18,678	27,239	89,220
	% Latino est.	24%	28%	54%	20%	9%	22%
	% Spanish-Surnamed	21%	25%	49%	18%	8%	20%
	% Asian-Surnamed	10%	4%	4%	8%	10%	8%
	% Filipino-Surnamed	5%	1%	2%	2%	1%	3%
	% NH White est.	43%	18%	27%	46%	71%	47%
	% NH Black	21%	55%	30%	28%	10%	25%
Voter Turnout (Nov 2014)	Total	11,034	6,813	4,245	10,268	17,964	50,324
	% Latino est.	17%	17%	41%	15%	7%	15%
	% Spanish-Surnamed	16%	16%	37%	13%	6%	14%
	% Asian-Surnamed	9%	4%	4%	7%	9%	7%
	% Filipino-Surnamed	4%	1%	3%	2%	1%	2%
	% NH White est.	50%	20%	25%	45%	74%	51%
	% NH Black est.	20%	58%	26%	31%	9%	24%
ACS Pop. Est.	Total	48,581	49,919	48,918	48,714	49,412	245,544
Age	age0-19	21%	29%	29%	21%	18%	24%
	age20-60	56%	57%	57%	57%	55%	56%
	age60plus	23%	14%	14%	22%	27%	20%
Immigration	immigrants	30%	35%	44%	31%	25%	33%
	naturalized	71%	31%	37%	55%	54%	48%
Language spoken at home	english	58%	45%	28%	54%	67%	50%
	spanish	14%	43%	56%	24%	10%	29%
	asian-lang	21%	9%	12%	14%	13%	14%
	other lang	8%	4%	4%	8%	10%	7%
Language Fluency	Speaks Eng. "Less than Very Well"	16%	28%	38%	20%	14%	23%
Education (among those age 25+)	hs-grad	54%	53%	51%	58%	35%	50%
	bachelor	24%	12%	10%	19%	31%	20%
	graduatedegree	11%	5%	3%	9%	28%	12%
Child in Household	child-under18	29%	34%	41%	26%	23%	30%
Pct of Pop. Age 16+	employed	61%	57%	58%	59%	63%	60%
Household Income	income 0-25k	11%	29%	25%	16%	12%	18%
	income 25-50k	16%	28%	27%	21%	16%	21%
	income 50-75k	17%	18%	20%	18%	17%	18%
	income 75-200k	47%	24%	27%	38%	43%	37%
	income 200k-plus	9%	2%	2%	6%	13%	7%
Housing Stats	single family	82%	62%	71%	70%	73%	72%
	multi-family	18%	38%	29%	30%	27%	28%
	rented	26%	61%	54%	44%	38%	44%
	owned	74%	39%	46%	56%	62%	56%
Total population data from the 2010 Decennial Census.							
Surname-based Voter Registration and Turnout data from the California Statewide Database.							
Latino voter registration and turnout data are Spanish-surname counts adjusted using Census Population Department undercount estimates. NH White and NH Black registration and turnout counts estimated by NDC. Citizen Voting Age Pop., Age, Immigration, and other demographics from the 2012-2016 American Community Survey and Special Tabulation 5-year data.							